



**HATCH
CLADDING**



COMPANY PROFILE





HATCH CLADDING

GRC

Modern Projects

Natural Stones

Artificial Stones

Private Villas

Government Buildings

Embassies

Mosques

Residential & Commercial buildings

Malls

Schools

Palaces

Boundary Wall

THE
NEW
TREN
DING



INTRODUCTION

Hatch Cladding was found by Mr. Jameel & Mr Anas in 2010 year, The main purpose of our company is to provide the best quality of fixing and finishing.

It was the idea presented by Mr. Jameel to offer a well-organized solution for companies that are low in man power in order to complete there project's, a sub-contractor to have their work done with in time.

Since the 1st day Hatch Cladding over ten years, Hatch Cladding has executed numerous various projects.

The company has successfully completed on time magnificent projects such as multi story commercial buildings, office buildings, palaces, luxury villas, group of commercial residential villas, military projects up to highest standard under he supervision of our highly qualified and experienced staff, skilled laborer's to transform our client's dream into reality.

The company's aim of service commitment has made to achieve a better quality fixing, finishing and performance of work based on international standards of practice, our professional & skilled staff performs with quality, safety and excellence to ensure the optimal client satisfaction, our mission is to serve by providing speedy and efficient service in order to maintain with pride and honor, and look forward to a prosperous future.

The Hatch Cladding, we deal with all types of artificial stone and CRC works.

Our trade is to fix be spoke artificial stone units in the form of re constitution stone dust and limestone chippings mixed with cements, dyes and sands.

The scale of our projects varies from simple one off pieces or small contracts such as shimmy pots or runs of balustrading. through to vast architectural works comprising of columns, capitals, cornices and many other features



MISSION

Providing our Customers with the highest Quality for finishing of Goods and Services, providing our Partners and Business Associates with the best Support to ensure our common success, encouraging in our employees an Entrepreneur's spirit, and a sense of Company ownership, and customer's partnership always be guided by our Principles of Integrity, high Moral Values and Goodwill building, to set a benchmark in quality services.

VISION

Our future position in international competition will not be left to chance. We are actively shaping our future with innovative ideas, clear messages and targeted actions. We pursue our goals with a clear vision that guides our thinking and actions.

This corporate image serves all employees of the Harmony Furniture Factory as a guide to the way into the future. our aim is to be a highly attractive fixer for our customers and the leader in our market. We achieve this goal by providing best quality finishing and services that guarantee our customers sustained success. to achieve this, we rely on professional and human expertise, our know-how and ingenuity as well as being open minded towards our customers and employees.

VALUES

Be creative and innovate

Act as entrepreneurs

Quality excellence

Strive to be the best in all we do



TECHNICAL GUIDANCE

HATCH COMMITMENT TO QUALITY & INNOVATION

Hatch is committed to innovative product development and manufacture.

To help you obtain maximum enjoyment and long service from any HATCH product, we would be pleased to make you aware of the following.

The evolution of new products design is continuous and information is subject to change without notice.

Customers should check with the supplier to ensure that they have the latest details.

All HATCH products are manufactured to the appropriate International (BS, DIN, ASTM) Standard where applicable.

Where products (or intended usage) lie outside the scope of a British or draft European standard, HATCH own standard will be employed.

All products are supplied subject to HATCH Standard Conditions of sale, a copy of which is available on request. Liability in respect of any statements, conditions, warranties and representations made on behalf of the company is limited in accordance with the terms set out in the standard conditions for sale

HEALTH & SAFETY

SAFE WORKPLACES, ENHANCED PRODUCTIVITY

By helping to create a safe operating environment, our company's approach helps you better protect workers. Our solutions enhance work safety and operations, ensuring your workers work safely and efficiently. Through a combination of industry-leading user experience and installation that encourages user adoption, this helps improve uptime and productivity

LONG-TERM HEALTH AND PERFORMANCE OF WORKERS

Our company's approach enables you to support the long-term health of your workers. From occupational health to industrial hygiene, ergonomics, well-being and more, our programs are designed to help you protect the health and performance of your workers over time



ORGANIZATION CHART

HATCH CLADDING

PROJECT MANAGER

2 NOS

QUALITY
CONTROL

PROJECT
ENGINEER

2 NOS

QUANTITY
SURVEYOR

ACCOUNTANT

SALESMAN

SITE
SUPERVISORS

5 NOS

MASONS

35 NOS

FINISHING
& PAINTING

10 NOS

HELPERS

20 NOS



HATCH WARRANTY

A comprehensive **10-year** warranty on products installed as per Hatch recommendations and by its authorized dealer or distributor. This warranty is offered as an additional benefit by Hatch General and in no way affects any party's statutory rights. The total liability in respect of all or any claims covered by this guarantee shall not exceed the price of the product. In the unlikely event of the products reaching, you in less than satisfactory condition, you should notify the retailer immediately before the installation by official notification. In addition to this, responsibility for costs incurred for uplifting and relaying defective products may be prejudiced if, upon reasonable inspection, the defect ought to have been apparent prior to laying.

HATCH CLADDING HEALTH & SAFETY PLAN

HEALTH AND SAFETY STATEMENT

the Health and safety as required by corporate development or legislative change and ensures that safety rules are enforced, promotes awareness of safe working practices by induction courses, safety training program and liaising with safety committees.

The Management firmly believes that safety comes first, health and safety Policy Statement.

Following are all key management objectives & responsibilities for the HATCH:

- Prevention of all injuries and occupational diseases.
- Health and safety is a fine management responsibility.
- Health and safety are of equal importance as other business objectives.
- Creation of a safe and healthy work environment
- Establishment of safe and healthy work practices.
- Ensuring effective health and safety communication.
- Creating interest and enthusiasm in health and safety.
- Developing personal responsibility for health and safety.



COMPANY POLICY

HATCH CLADDING is to strive towards achieving a safe and healthy environment for all its employees at all the work sites and abide by all rules and regulations formulated for the type of work | industry (as set forth in state and local standards.)

Safety is of utmost importance in performance Of all Operations and must be an integral part Of each work task. Safety should not be neglected because of undue haste; no job is so important or services so urgent that they cannot be performed safely. All employees must recognize their responsibilities in incorporating safety into their daily routine

HATCH CLADDING HEALTH & SAFETY PLAN

■ Following protective materials Checklist is also used

- Hard hats / Helmets
- Safety Glasses, Goggles and fact shields.
- Safety Boots
- Hearing Protection, Gloves, Fall Protection (safety belts)
- Flash lights
- Storage containers for inflammable and combustible material

Practical demonstration is made in areas or lifting techniques, firefighting, emergency procedures and first aid. Incentive Schemes are in force such as what's wrong competitions and prizes for minimum man days lost on account of accidents.

Analysis of accidents and man hours lost are calculated at half yearly intervals to arrive at the accident frequency and the accident incident rate. Methods used for calculation of accident rate and severity rates of accidents are given on the following pages.

All works and operations are periodically reviewed to determine if any additional safety equipment's are necessary.

Inspections of all equipment, tools and supplies are made prior to each use



DISCIPLINARY ACTION

If employees do not adhere to safety standards despite repeated warnings, a system of imposing fines is being evolved, with the rate of fine being proportional to the severity of the safety violation.

SAFETY TRAINING COMMUNICATION

Safety training and orientation are necessary elements of any effective safety program.

Supervisors and workers must understand the company's safety policy and procedures and hazards associated with work.

Training is provided to workers when they arrive on the site in the form of

informal lectures on the safe usage of tools and other equipment and the

necessity of using personal protective equipment. Training covers the company and protects safety policies and safety regulations.

Tool boxes are also held weekly on the sites for First Aid courses to keep them

updated. These trained persons then communicate the knowledge gained by them to other employees. Films on safety are screened in the labor accommodation provided.



HATCH CLADDING HEALTH & SAFETY PLAN

- First - Aid and Medical Treatment

Training and instructions in life -saving techniques like resuscitation, care of unconscious and control Of bleeding are given, Employees are sent for first aid training courses organized by Ministry of Health and the medical facilities include a doctor employed by the company who in addition to providing campaigns in regard to use of tobacco, alcohol, drugs and inadequate Nutrition are also conducted sickness and absenteeism are monitored by proper record keeping for identification of employees after prolonged illness.

- Company Checks

- 1) Training course s organize d by Ministry of Health,
- 2) Footwear to have an adequate had sole so as to provide sufficient protection.
- 3) Safety bells, goggles and masks are provided to all workers to use when required.
- 4) Electricity supplied throughout the factory is connected through Circuit breakers in the main distribution board and comply with Dubai Electricity company regulations.
- 5) Hoardings: The factory will have suitable hoarding notices so as to restrict the entry of any unauthorized personnel. The entry and exit gates will be dosed and padlocked during non-working hour.
- 6) A First Aid box will be present at all times on factory with contents of:
 - Panadol
 - Tincture iodine
 - Burn oil
 - Cut Band
 - Lotion-Dettol
 - Cotton
 - Deep Heat
 - Riko Cut spray
 - Salt tablets
 - Scissors
 - Vicks VapoRub.
- 7) Safety with penalties being imposed, if the company policies being not adhered to
- 8) Sub-Contractors will be responsible for the purchase of safety Equipment



HATCH
CLADDING

GRC



HATCH
CLADDING



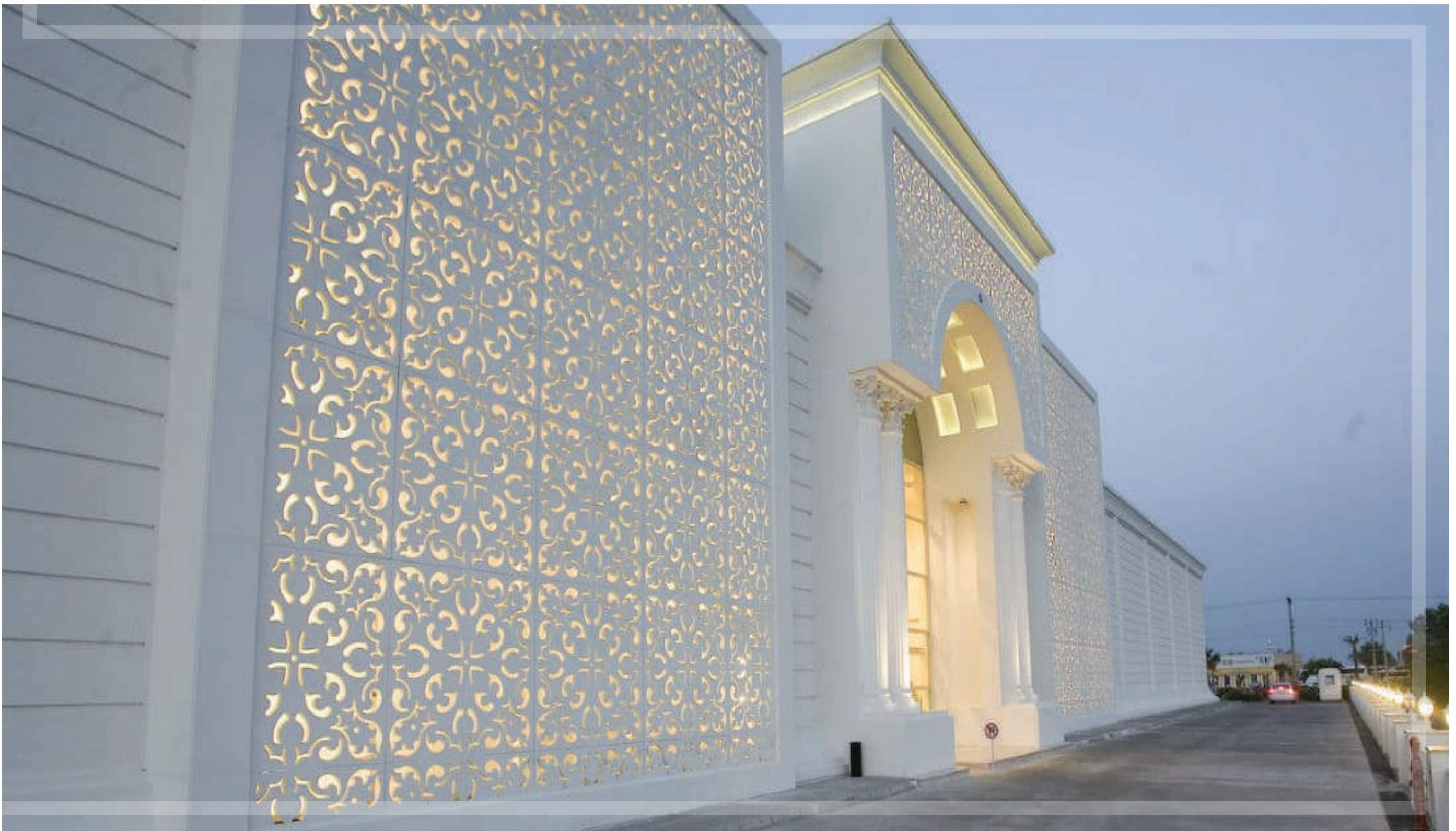


HATCH
CLADDING



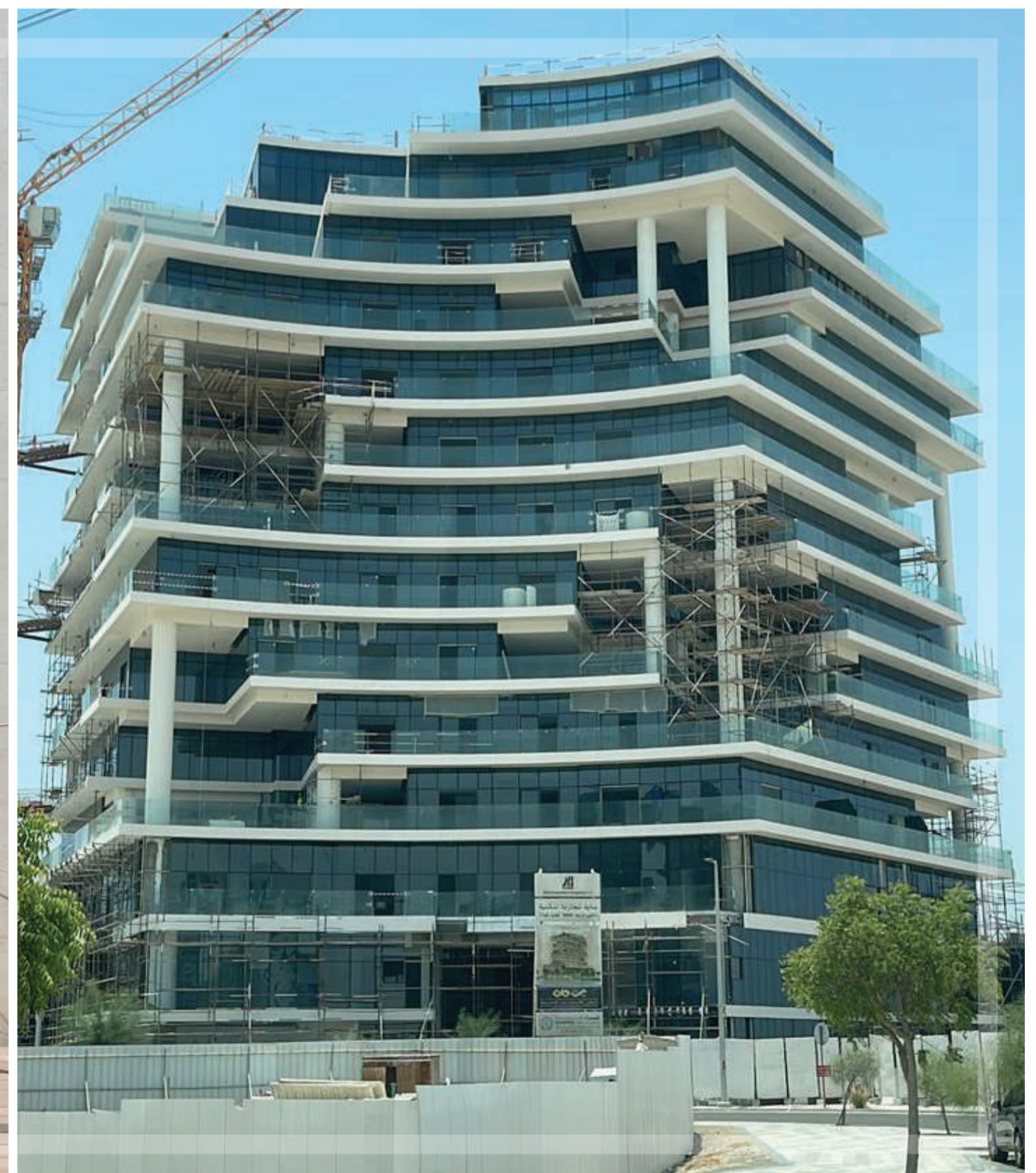
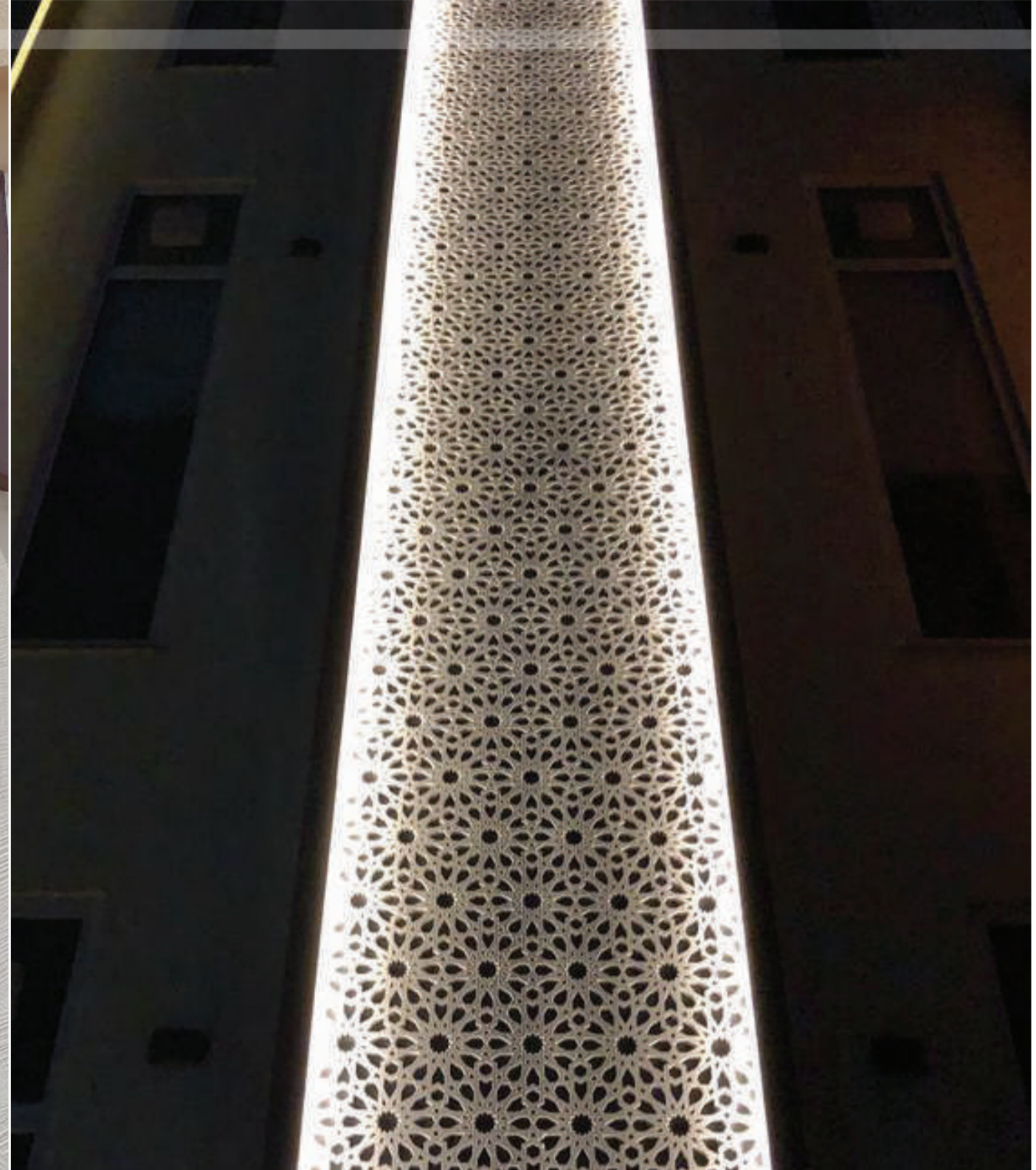


**HATCH
CLADDING**



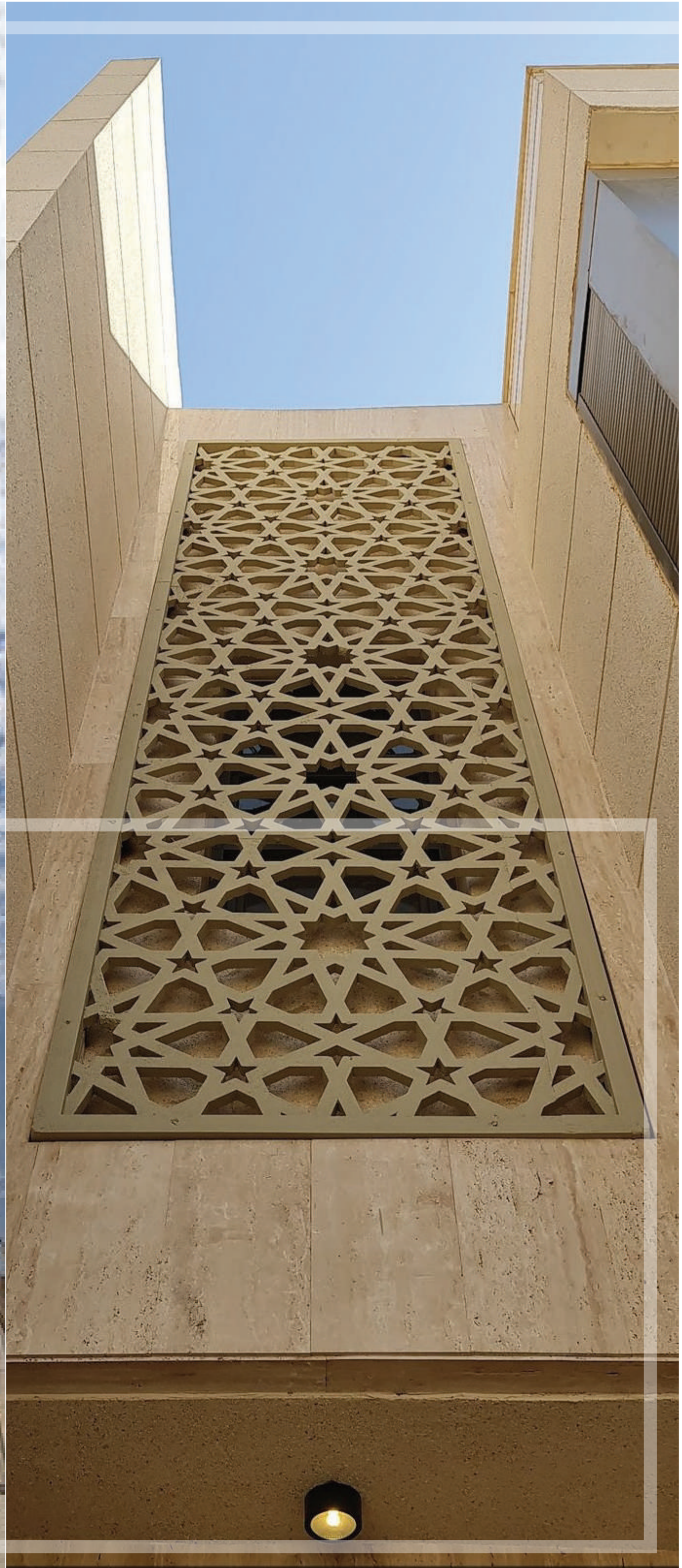
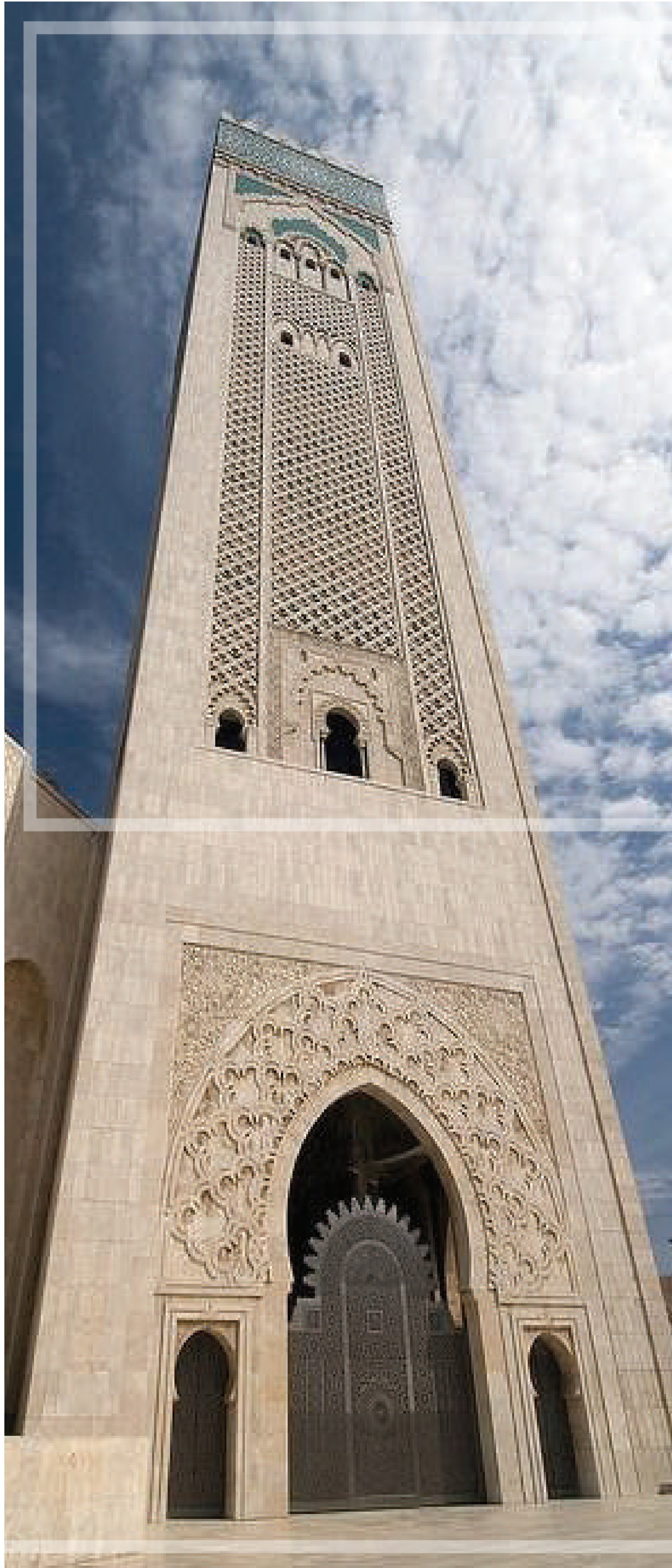


**HATCH
CLADDING**



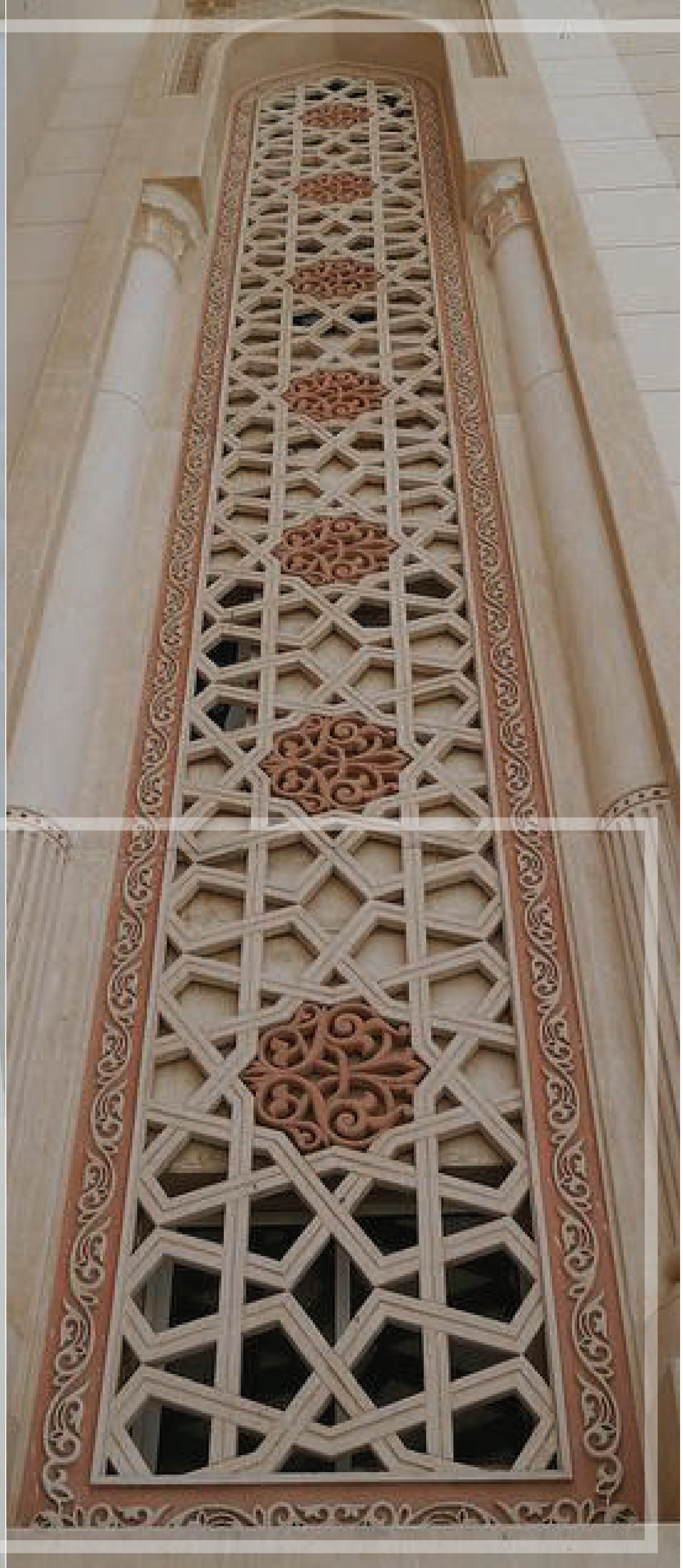
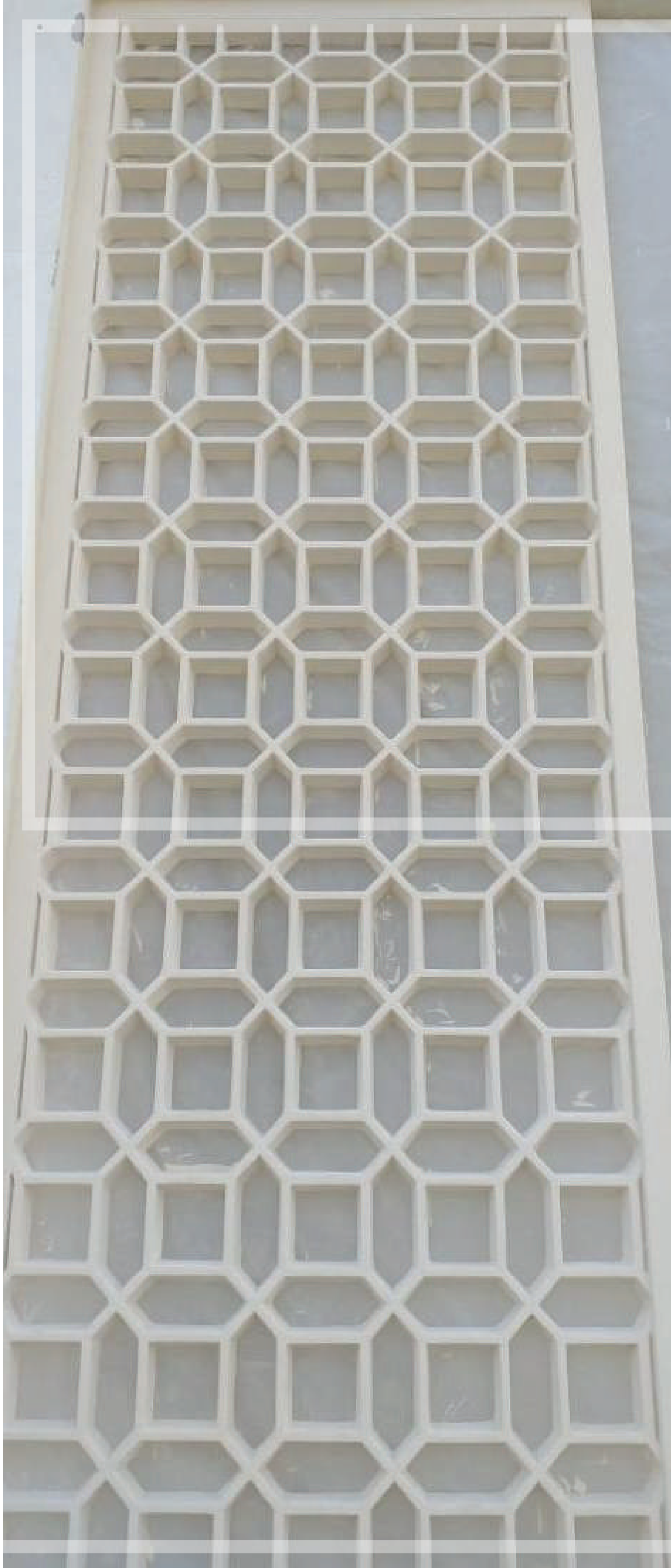


HATCH
CLADDING



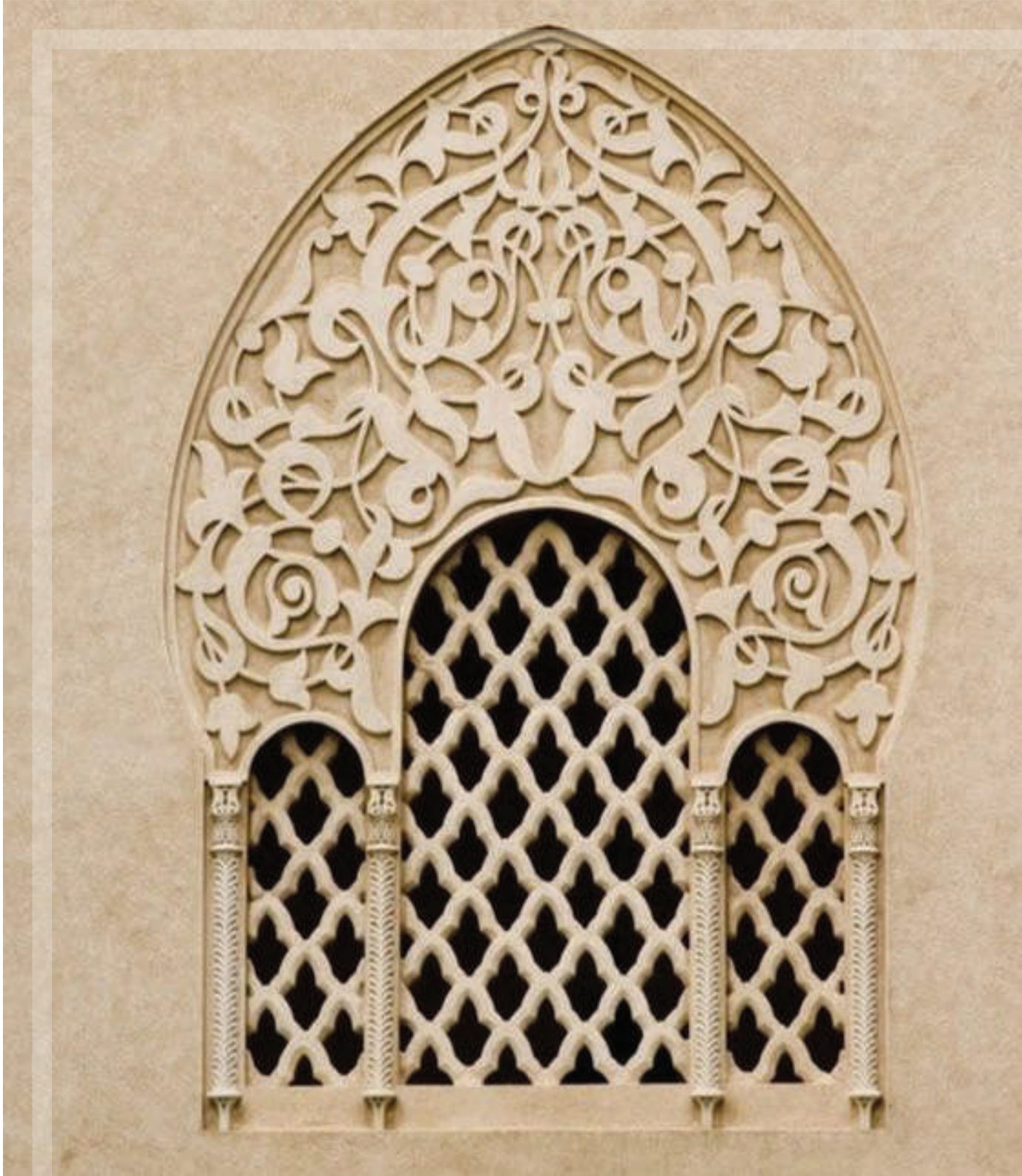


**HATCH
CLADDING**



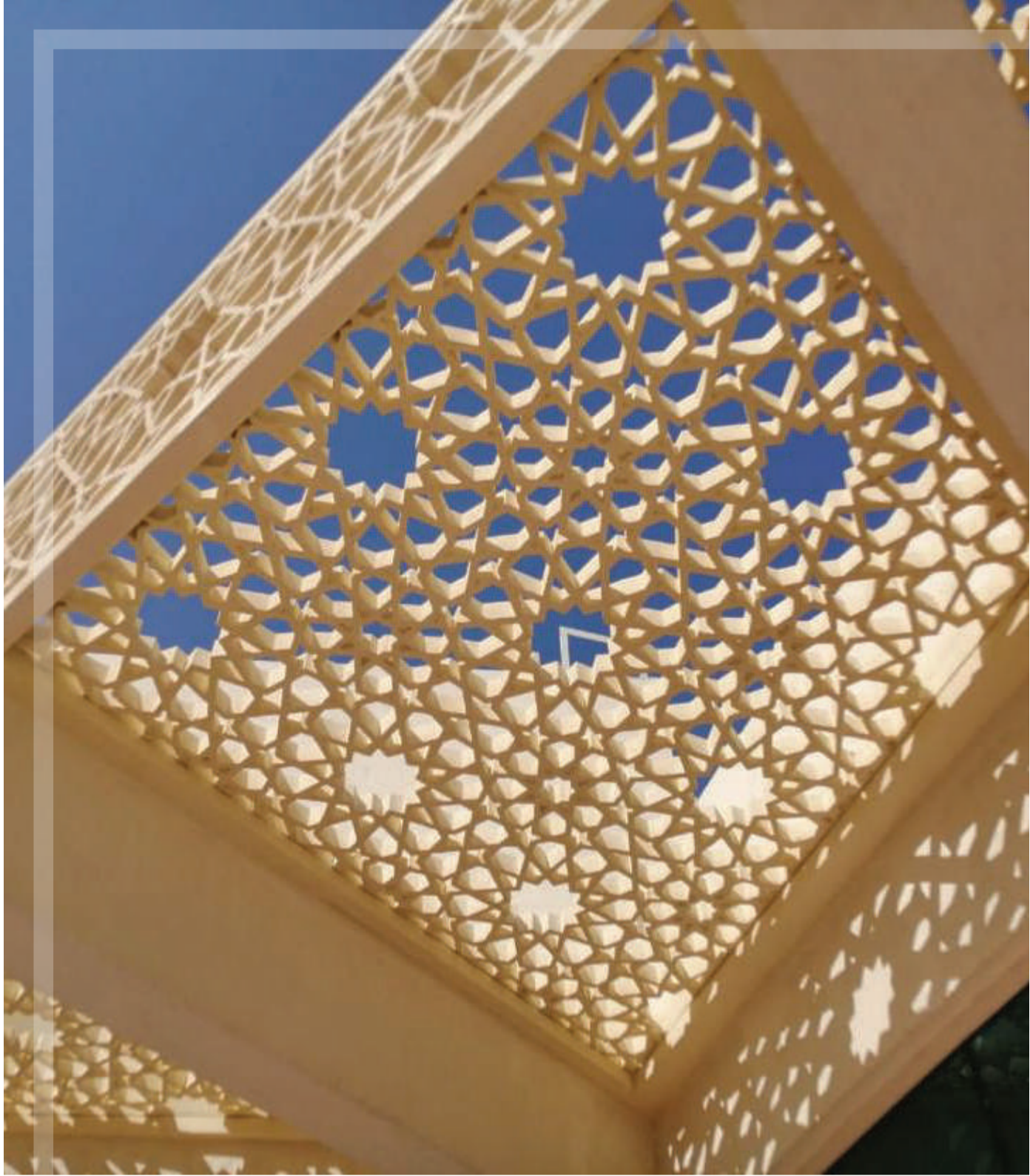


HATCH
CLADDING





HATCH
CLADDING





**HATCH
CLADDING**





**HATCH
CLADDING**

MODERN PROJECTS



HATCH
CLADDING





HATCH
CLADDING





HATCH
CLADDING



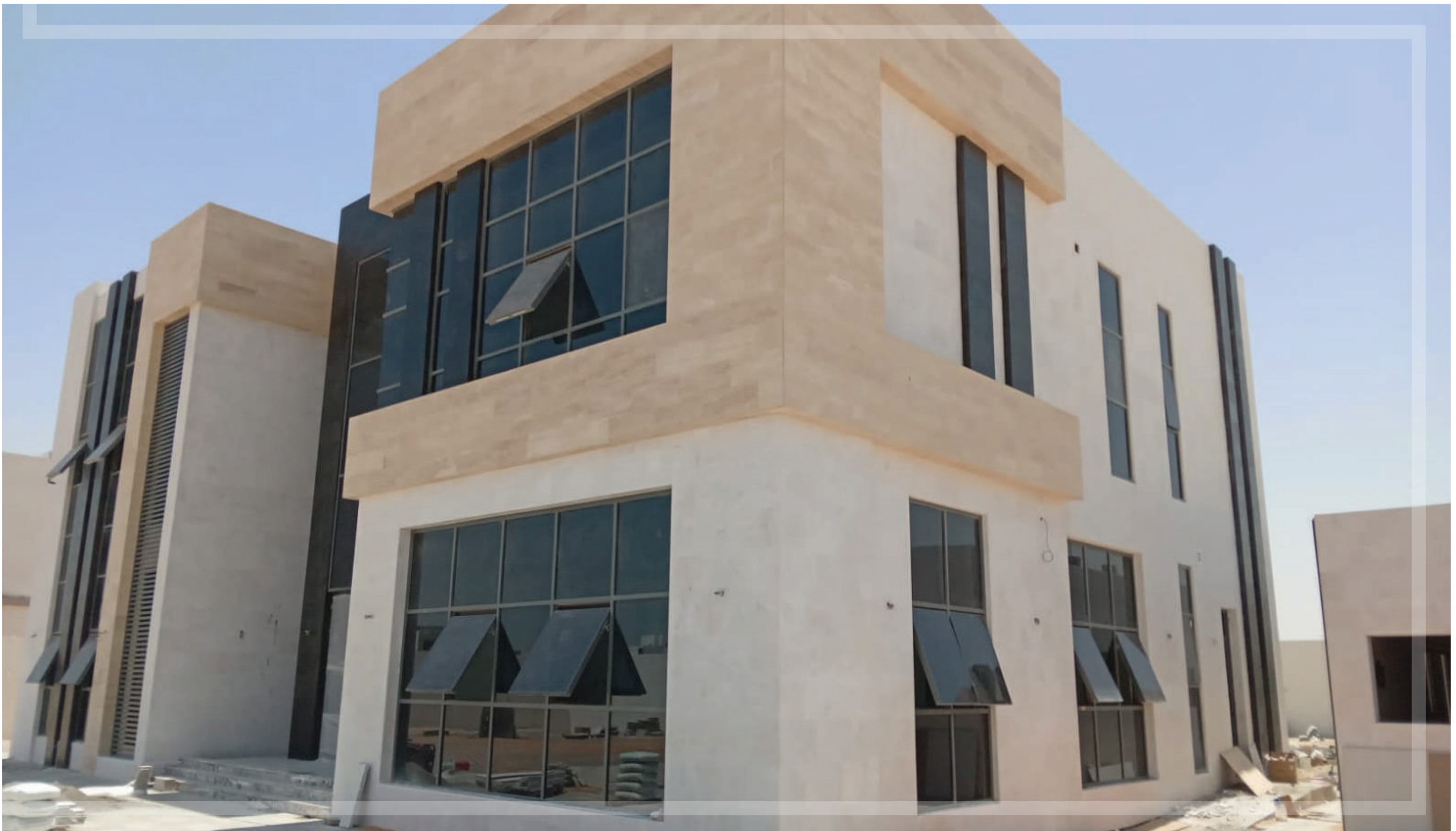


HATCH
CLADDING





**HATCH
CLADDING**





**HATCH
CLADDING**





HATCH
CLADDING





**HATCH
CLADDING**





**HATCH
CLADDING**





**HATCH
CLADDING**





**HATCH
CLADDING**





HATCH
CLADDING





HATCH
CLADDING



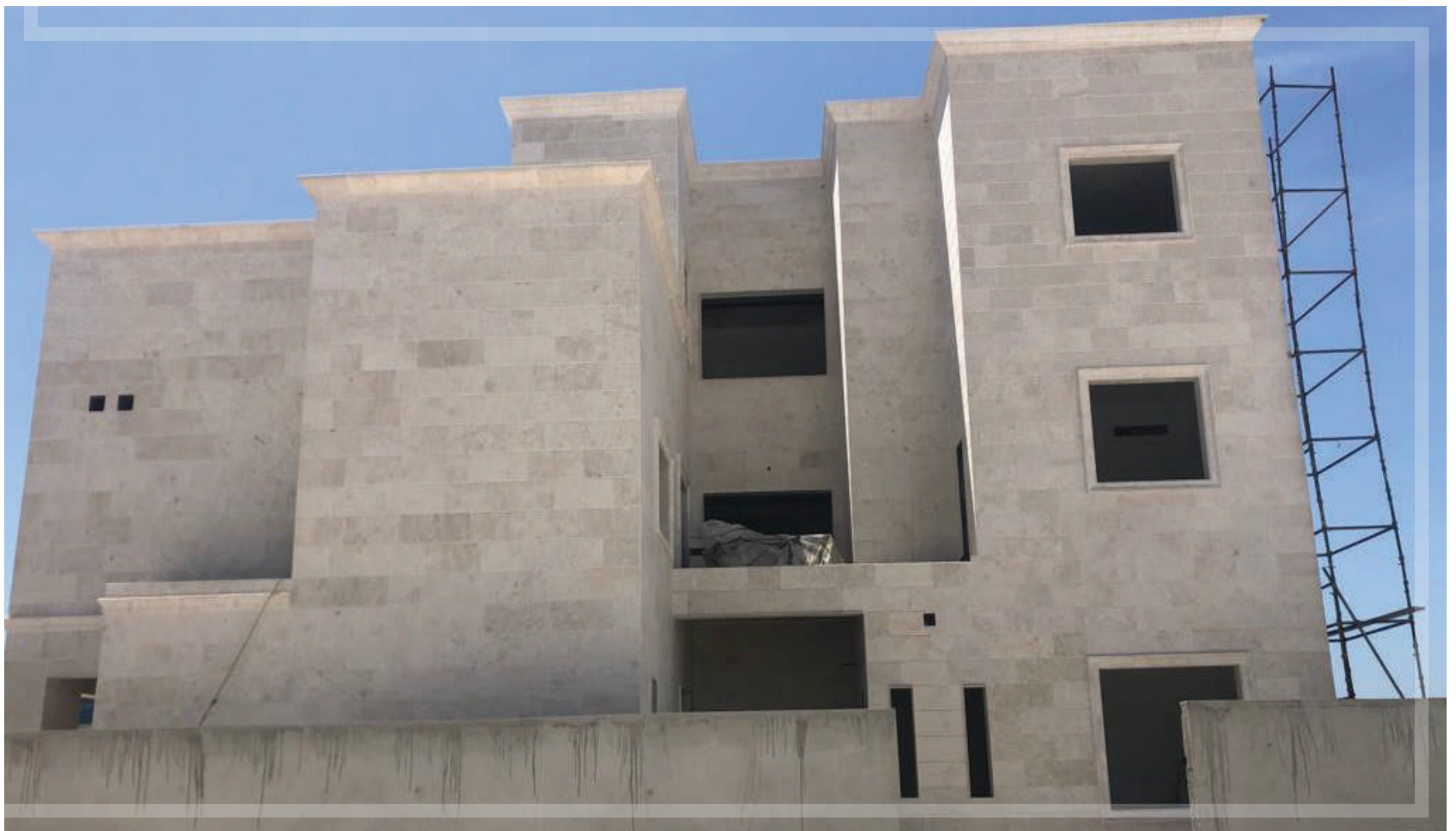


HATCH
CLADDING

NATURAL STONES

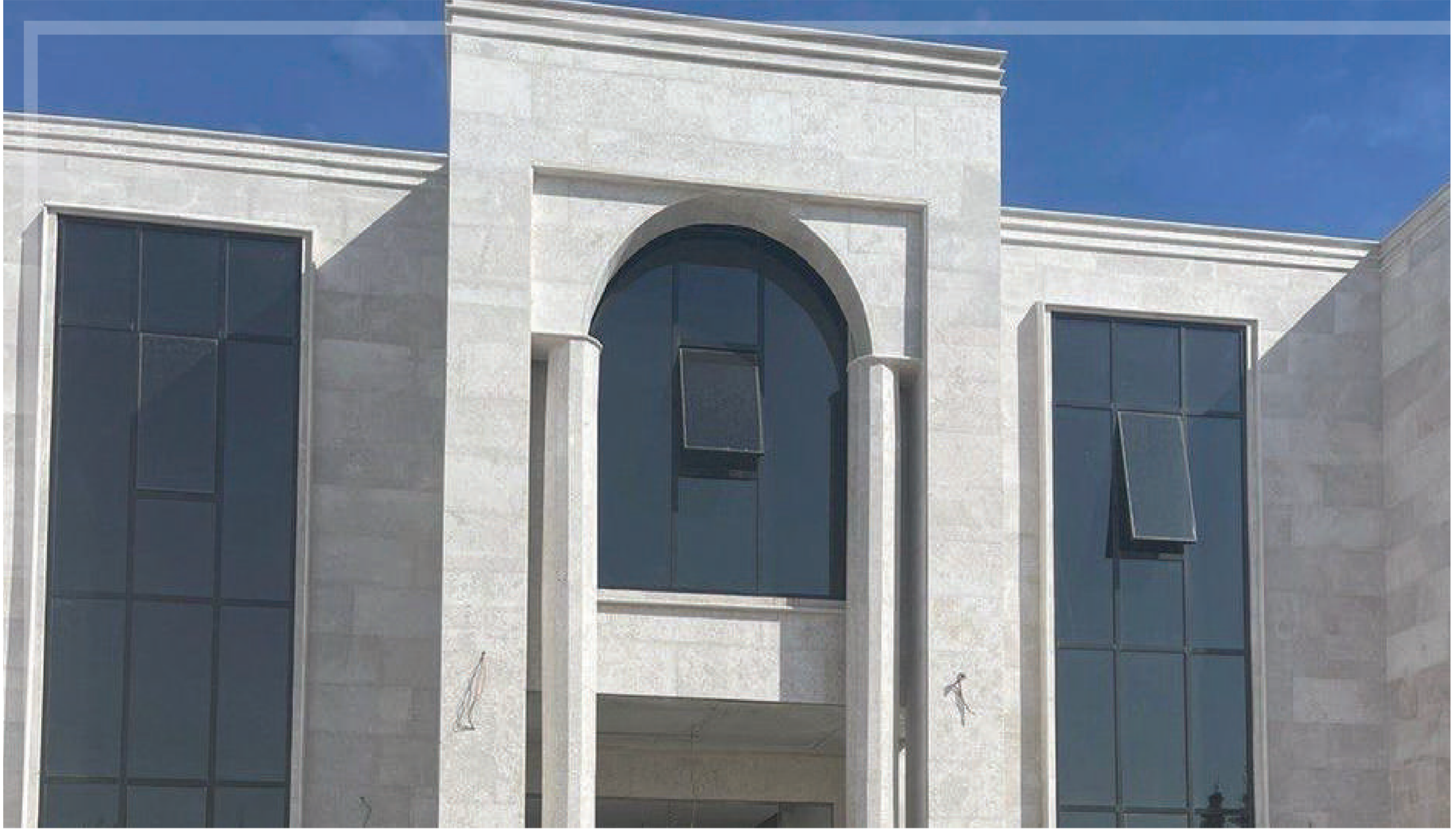


HATCH
CLADDING





HATCH
CLADDING





**HATCH
CLADDING**





HATCH
CLADDING

ARTIFICIAL STONES



HATCH
CLADDING





HATCH
CLADDING





HATCH
CLADDING





HATCH
CLADDING





HATCH
CLADDING





HATCH
CLADDING





HATCH
CLADDING





HATCH
CLADDING





HATCH
CLADDING





HATCH
CLADDING





HATCH
CLADDING

PRIVATE VILLAS

EXECUTED PROJECTS



**HATCH
CLADDING**

CLIENT:M/s. MINISTRY OF PRESIDENTIAL AFFAIRS

CONTRACTOR:M/s M4 Contracting S.A.R.L - Abu Dhabi

CONSULTANT:M/s. Makan Consulting Engineers LLc





**HATCH
CLADDING**

GOVERNMENT BUILDINGS

EXECUTED PROJECTS



**HATCH
CLADDING**

CLIENT:M/s. Ministry Of Interior Civil Defence Center

CONTRACTOR:M/s Housing Services Contracting L.L.C

CONSULTANT:M/s. Arenco Architectural & Engineering
Consultants





**HATCH
CLADDING**

CLIENT:M/s. Ministry Of Interior Civil Defense Center

CONTRACTOR:M/s Housing Services Contracting L.L.C

CONSULTANT:M/s. Arenco Architectural & Engineering Consultants





**HATCH
CLADDING**

EMBASSIES

EXECUTED PROJECTS



**HATCH
CLADDING**

CLIENT:M/s. Ministry of Urban Development and
planning

CONTRACTOR:M/s M4 Contracting S.A.R.L – Abu Dhabi

CONSULTANT:M/s. MBA and Al Bayaty Architects (JV)





**HATCH
CLADDING**

CLIENT: M/s. Ministry of Urban Development and
planning

CONTRACTOR: M/s M4 Contracting S.A.R.L – Abu Dhabi

CONSULTANT: M/s. MBA and Al Bayaty Architects (JV)



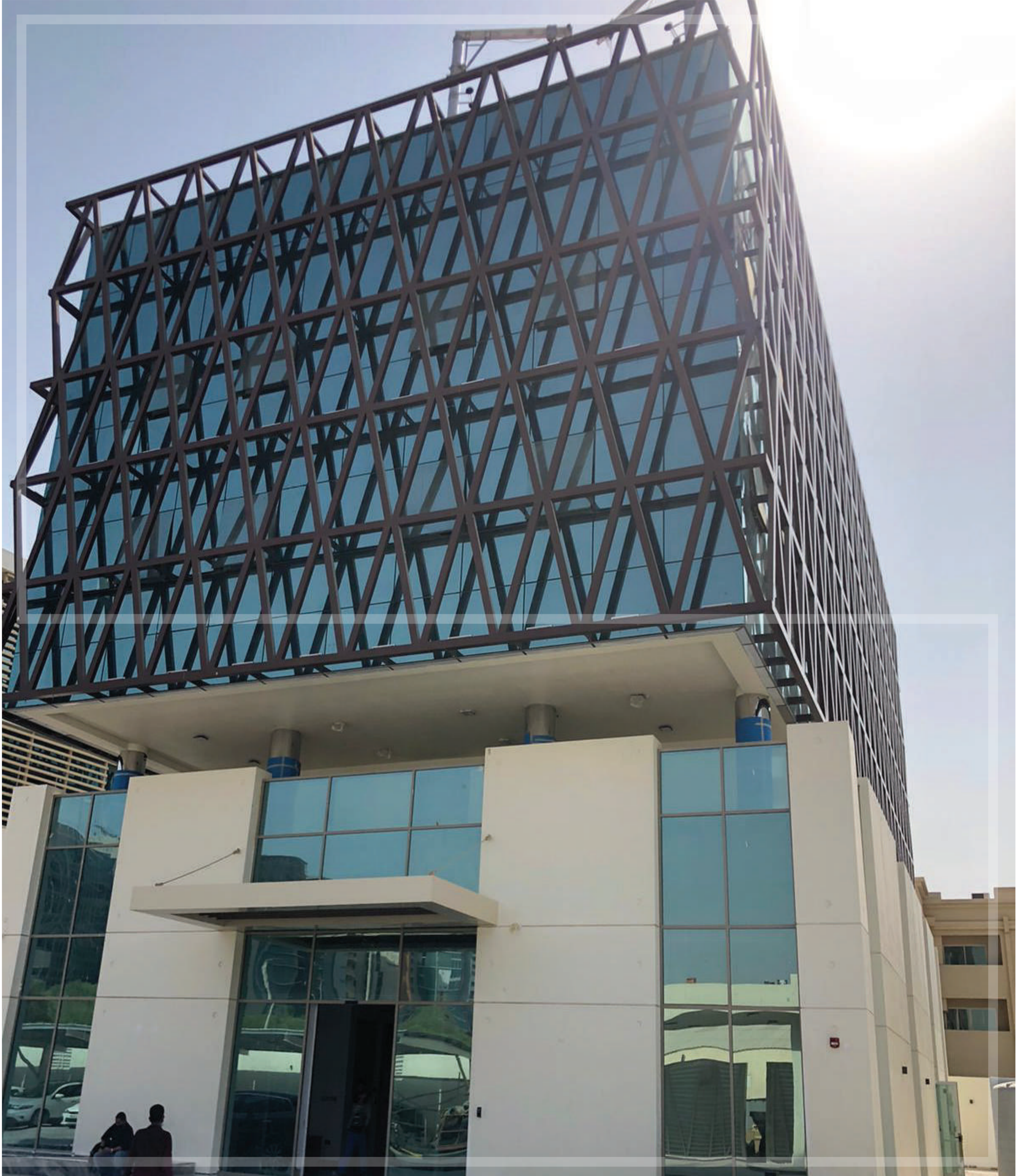


**HATCH
CLADDING**

CLIENT:Presidential Court

CONTRACTOR:Abu Dhabi International Contracting

CONSULTANT:Makan Consulting Engineers





**HATCH
CLADDING**

CLIENT:Presidential Court

CONTRACTOR:Abu Dhabi International Contracting

CONSULTANT:Makan Consulting Engineers





**HATCH
CLADDING**

CLIENT:Presidential Court

CONTRACTOR:Abu Dhabi International Contracting

CONSULTANT:Makan Consulting Engineers





**HATCH
CLADDING**

CLIENT:Presidential Court

CONTRACTOR:Abu Dhabi International Contracting

CONSULTANT:Makan Consulting Engineers





**HATCH
CLADDING**

CLIENT:Presidential Court

CONTRACTOR:Abu Dhabi International Contracting

CONSULTANT:Makan Consulting Engineers





HATCH
CLADDING

CLIENT:Presidential Court

CONTRACTOR:Abu Dhabi International Contracting

CONSULTANT:Makan Consulting Engineers





HATCH
CLADDING

MOSQUES

EXECUTED PROJECTS



**HATCH
CLADDING**

CLIENT:M/s. MIRAL ASSET MANGMENT LLC

CONTRACTOR:M/s M4 Contracting S.A.R.L – Abu Dhabi

CONSULTANT:M/s. X-ARCHITECTS





**HATCH
CLADDING**

CLIENT:M/s. MIRAL ASSET MANGMENT LLC

CONTRACTOR:M/s M4 Contracting S.A.R.L – Abu Dhabi

CONSULTANT:M/s. X-ARCHITECTS





**HATCH
CLADDING**

CLIENT:M/s. MIRAL ASSET MANGMENT LLC

CONTRACTOR:M/s M4 Contracting S.A.R.L – Abu Dhabi

CONSULTANT:M/s. X-ARCHITECTS





**HATCH
CLADDING**

CLIENT:M/s. MODON

CONTRACTOR:M/s:Desert Development Contracting

CONSULTANT:M/s. AlAin Consulting Engineering LLC





**HATCH
CLADDING**

CLIENT:M/s. MODON

CONTRACTOR:M/s:Desert Development Contracting

CONSULTANT:M/s. AlAin Consulting Engineering LLC





HATCH CLADDING

CLIENT:M/s. MODON

CONTRACTOR:M/s:Desert Development Contracting

CONSULTANT:M/s. AlAin Consulting Engineering LLC





**HATCH
CLADDING**

CLIENT: General Authority of Islamic Affairs
& Endowments AWQAF

CONTRACTOR: A&M International General Contracting

CONSULTANT: East Consult Engineering Consultancy





**HATCH
CLADDING**

CLIENT: General Authority of Islamic Affairs
& Endowments AWQAF

CONTRACTOR: A&M International General Contracting

CONSULTANT: East Consult Engineering Consultancy





**HATCH
CLADDING**

CLIENT: General Authority of Islamic Affairs
& Endowments AWQAF

CONTRACTOR: A&M International General Contracting

CONSULTANT: East Consult Engineering Consultancy





**HATCH
CLADDING**

CLIENT: General Authority of Islamic Affairs
& Endowments AWQAF

CONTRACTOR: A&M International General Contracting

CONSULTANT: East Consult Engineering Consultancy





**HATCH
CLADDING**

CLIENT: General Authority of Islamic Affairs
& Endowments AWQAF

CONTRACTOR: A&M International General Contracting

CONSULTANT: East Consult Engineering Consultancy



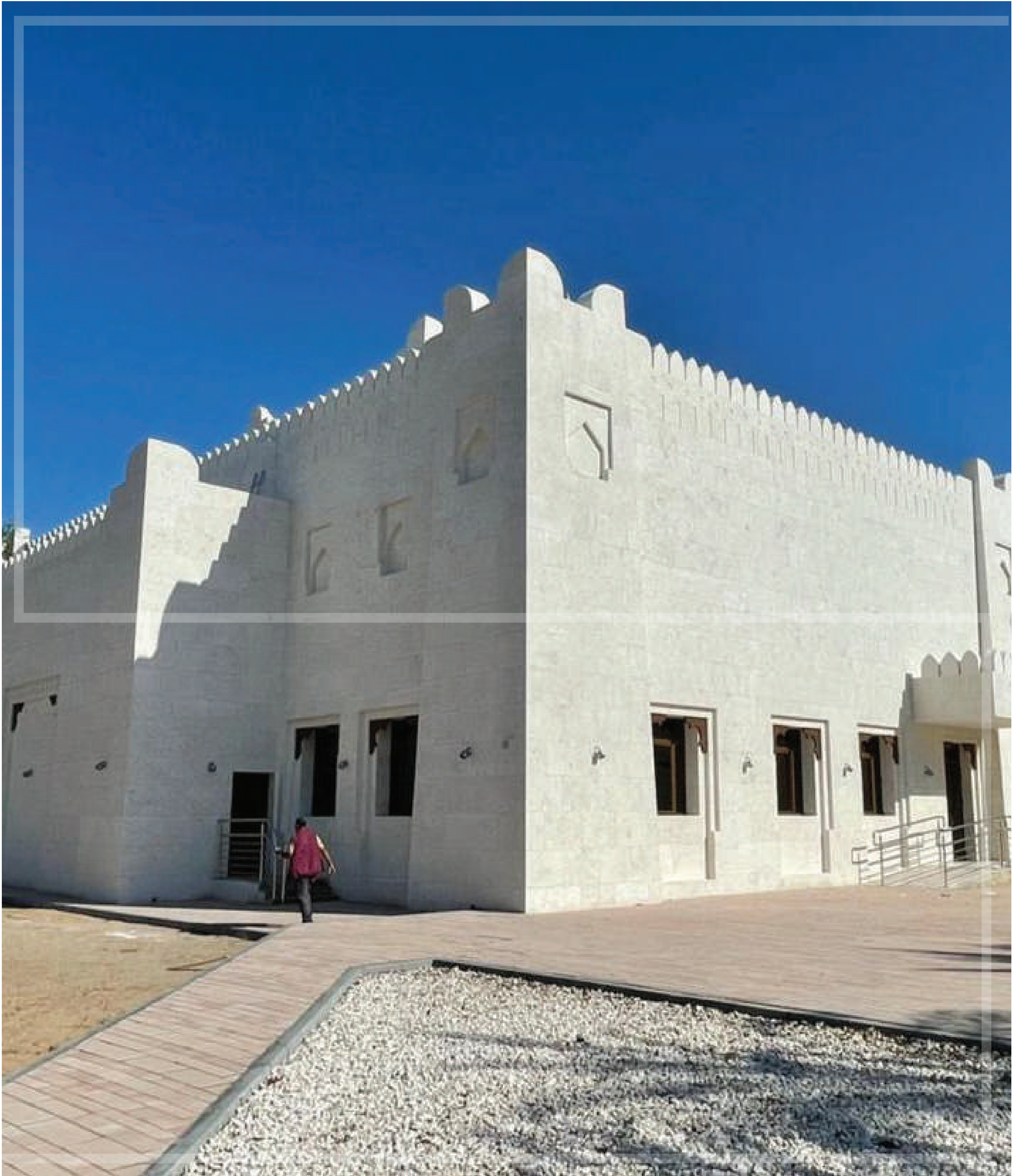


**HATCH
CLADDING**

CLIENT: General Authority of Islamic Affairs
& Endowments AWQAF

CONTRACTOR: A&M International General Contracting

CONSULTANT: East Consult Engineering Consultancy





**HATCH
CLADDING**

CLIENT:

CONTRACTOR:

CONSULTANT:





**HATCH
CLADDING**

CLIENT:

CONTRACTOR:

CONSULTANT:





**HATCH
CLADDING**

CLIENT:

CONTRACTOR:

CONSULTANT:





**HATCH
CLADDING**

CLIENT:

CONTRACTOR:

CONSULTANT:



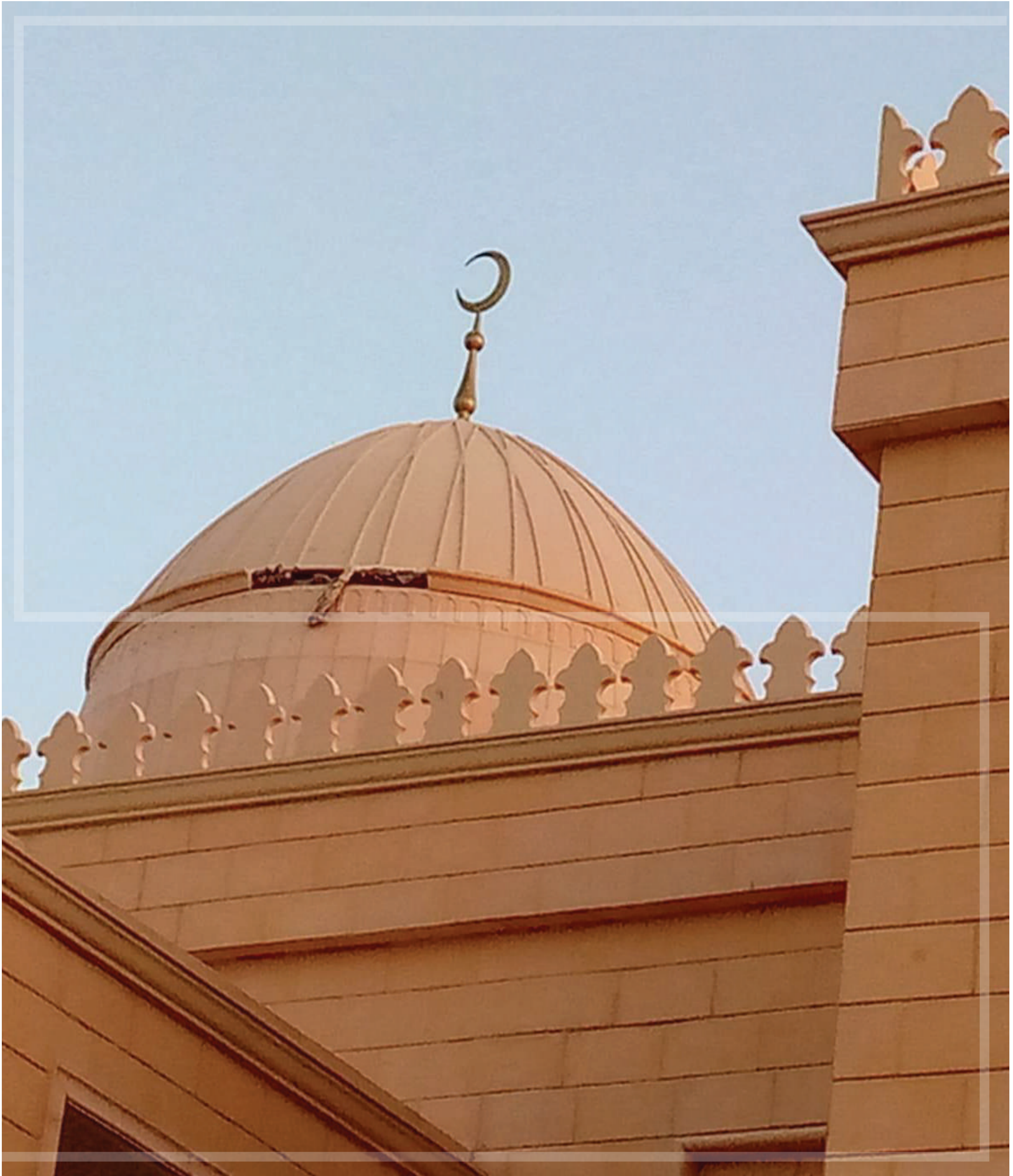


**HATCH
CLADDING**

CLIENT:

CONTRACTOR:

CONSULTANT:





**HATCH
CLADDING**

CLIENT:

CONTRACTOR:

CONSULTANT:





**HATCH
CLADDING**

RESIDENTIAL & COMMERCIAL BUILDINGS

EXECUTED PROJECTS



**HATCH
CLADDING**

CLIENT:Reportage Prime Properties

CONTRACTOR:A&M International General Contracting
L.L.C

CONSULTANT:Pioneer Engineering Consultancy L.L.C





HATCH CLADDING

CLIENT: Reportage Prime Properties

CONTRACTOR: A&M International General Contracting
L.L.C

CONSULTANT: Pioneer Engineering Consultancy L.L.C



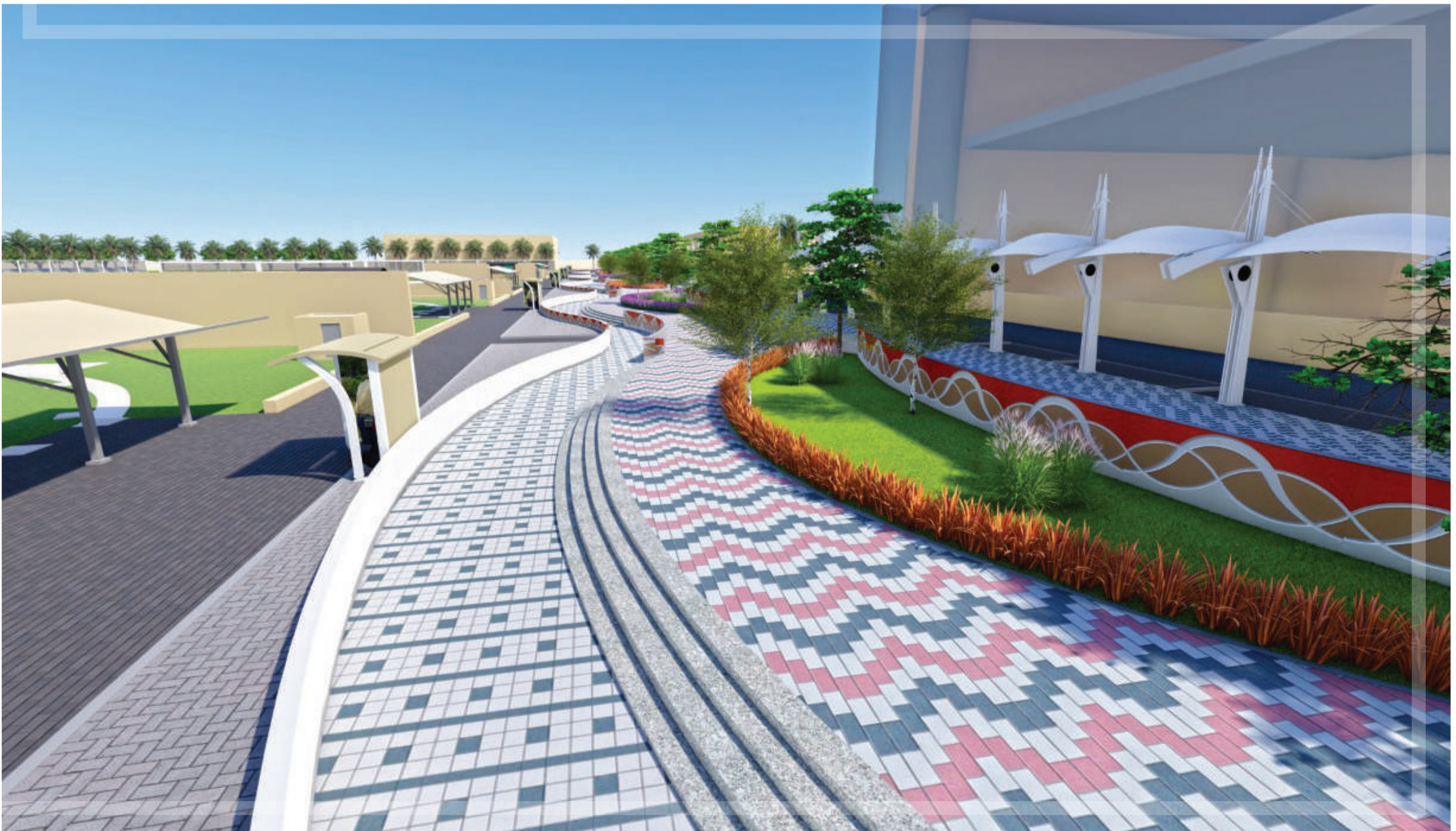


**HATCH
CLADDING**

CLIENT:M/s. Ministry Of Interior Civil Defence Center

CONTRACTOR:A&M International General Contracting
L.L.C

CONSULTANT:Pioneer Engineering Consultancy L.L.C





**HATCH
CLADDING**

CLIENT: M/s. Ministry Of Interior Civil Defence Center

CONTRACTOR: A&M International General Contracting
L.L.C

CONSULTANT: Pioneer Engineering Consultancy L.L.C



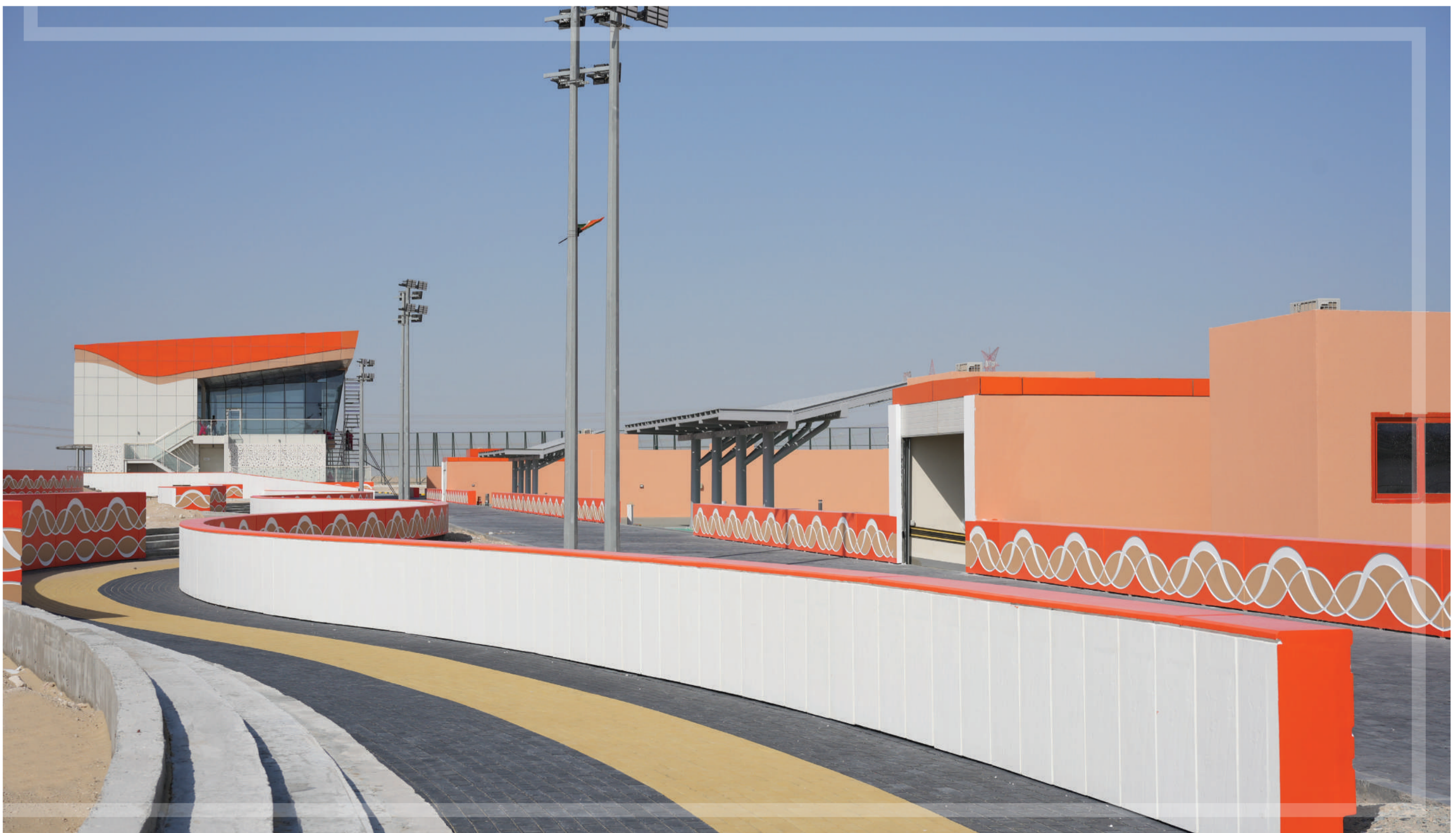


**HATCH
CLADDING**

CLIENT:M/s. Ministry Of Interior Civil Defence Center

CONTRACTOR:A&M International General Contracting
L.L.C

CONSULTANT:Pioneer Engineering Consultancy L.L.C





**HATCH
CLADDING**

CLIENT: M/s. Ministry Of Interior Civil Defence Center

CONTRACTOR: A&M International General Contracting
L.L.C

CONSULTANT: Pioneer Engineering Consultancy L.L.C



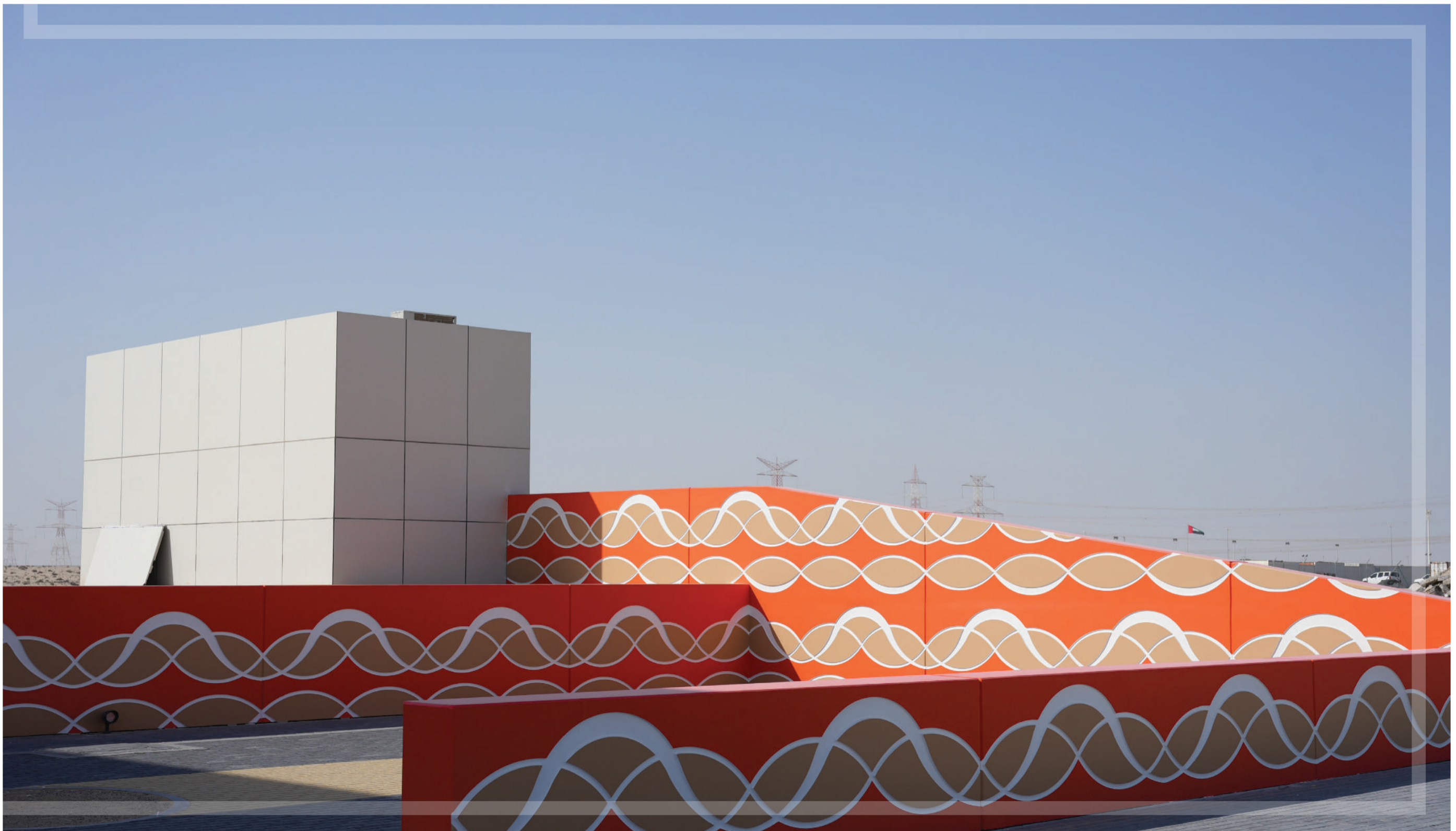
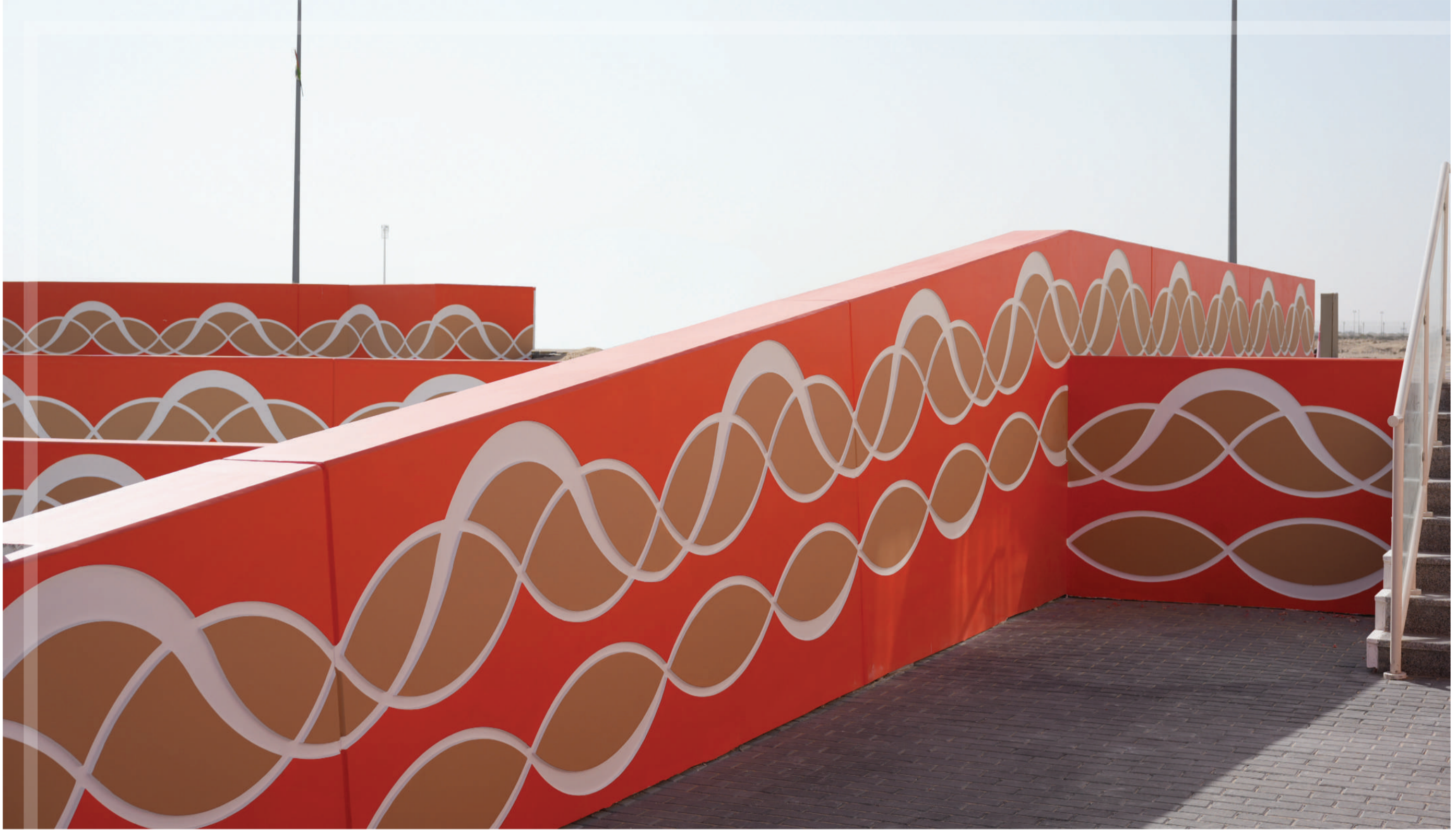


HATCH CLADDING

CLIENT:M/s. Ministry Of Interior Civil Defence Center

CONTRACTOR:A&M International General Contracting
L.L.C

CONSULTANT:Pioneer Engineering Consultancy L.L.C





**HATCH
CLADDING**

MALLS

EXECUTED PROJECTS



**HATCH
CLADDING**

CLIENT: East and West International Group

CONTRACTOR:

CONSULTANT: ACG – Architectural Consulting group





HATCH CLADDING

CLIENT: East and West International Group

CONTRACTOR:

CONSULTANT: ACG – Architectural Consulting group





**HATCH
CLADDING**

CLIENT: East and West International Group

CONTRACTOR:

CONSULTANT: ACG – Architectural Consulting group





HATCH
CLADDING

SCHOOLS

EXECUTED PROJECTS



**HATCH
CLADDING**

CLIENT: M/s. ADEK-DEPARTMENT OF EDUCATION & KNOWLEDGE

CONTRACTOR: M/s ALFADAA CONT & MAINT LLC

CONSULTANT: M/s. ALTORATH INTERNATIONAL ENGINEERING CONSULTANT





**HATCH
CLADDING**

CLIENT:M/s. ADEK-DEPARTMENT OF EDUCATION & KNOWLEDGE

CONTRACTOR:M/s ALFADAA CONT & MAINT LLC

CONSULTANT:M/s. ALTORATH INTERNATIONAL ENGINEERING CONSULTANT





HATCH
CLADDING





**HATCH
CLADDING**

CLIENT: M/s. ADEK-DEPARTMENT OF EDUCATION & KNOWLEDGE

CONTRACTOR: M/s ALFADAA CONT & MAINT LLC

CONSULTANT: M/s. ALTORATH INTERNATIONAL ENGINEERING CONSULTANT





**HATCH
CLADDING**

CLIENT:M/s. ADEK-DEPARTMENT OF EDUCATION & KNOWLEDGE

CONTRACTOR:M/s ALFADAA CONT & MAINT LLC

CONSULTANT:M/s. ALTORATH INTERNATIONAL ENGINEERING CONSULTANT





HATCH
CLADDING

PALACES

EXECUTED PROJECTS



HATCH
CLADDING





HATCH
CLADDING





HATCH
CLADDING





**HATCH
CLADDING**





**HATCH
CLADDING**





**HATCH
CLADDING**

BOUNDARY WALL



HATCH
CLADDING





HATCH
CLADDING





HATCH
CLADDING



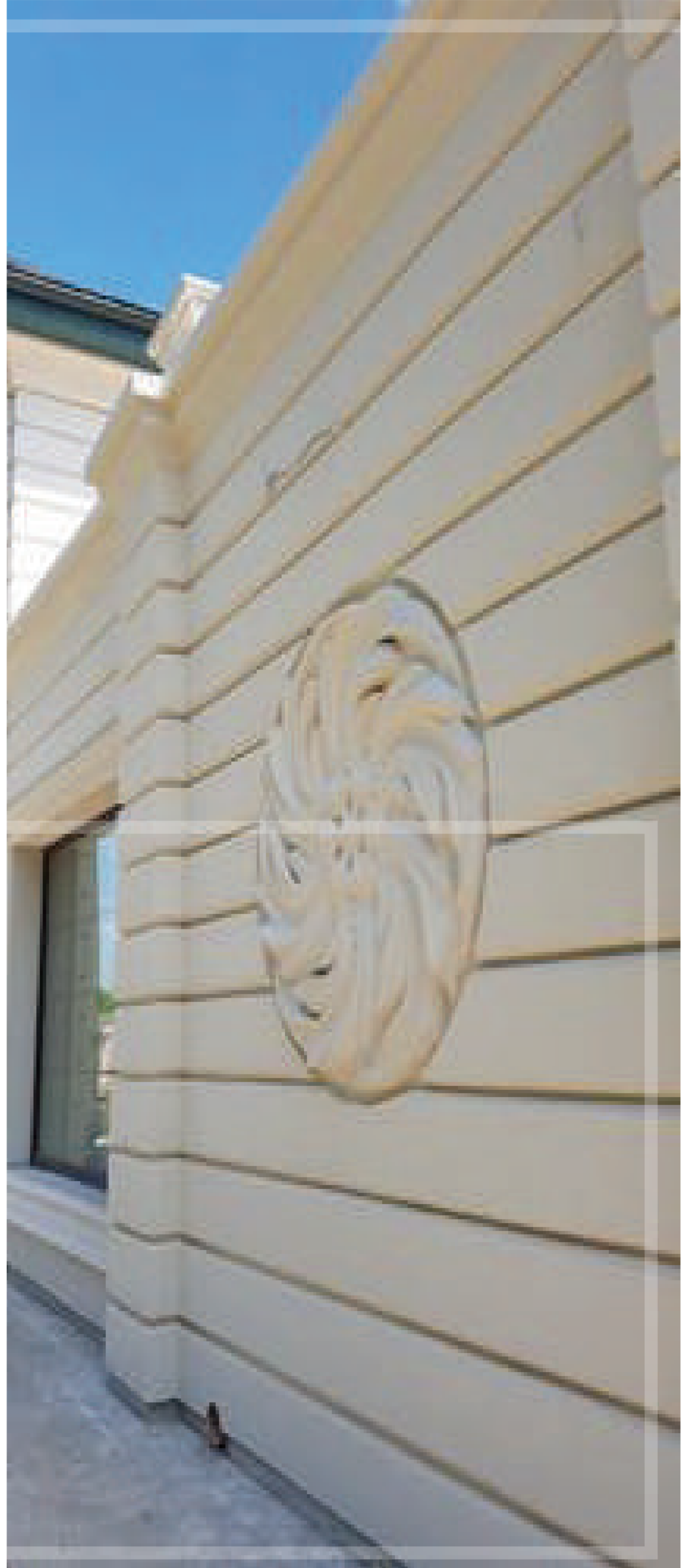


HATCH
CLADDING





HATCH
CLADDING





HATCH CLADDING

مركز أبوظبي للأعمال
Abu Dhabi Business Center



Economic License

Commercial License

رخصة اقتصادية رخصة تجارية

License No	:	CN-1829968	:	رقم الرخصة
ADCCI No	:	327213	:	عضوية الغرفة
Establishment Card MOHRE	:	829284	:	وزارة الموارد البشرية والتوطين بطاقة المنشأة
Establishment Card ICA	:		:	الهيئة الاتحادية للهوية والجنسية. بطاقة المنشأة
Legal Form	:	Establishment	:	مؤسسة فردية الشكل القانوني
Trade Name	:	HATCH GENERAL MAINTENANCE & LANDSCAPING	:	هاتش للصيانة العامة و تصميم الحدائق الإسم التجاري
Establishment Date	:	21/07/2014	:	تاريخ تأسيس المنشأة
Issue Date	:	10/11/2022	:	تاريخ الإصدار
Expiry Date	:	10/11/2026	:	تاريخ الإنتهاء

الصلة Role	الجنسية Nationality	الملاك / الشركاء Owners / Partners	الرمز No.
مالك Owner	عمان Oman	خليفة بن علي بن راشد بن عبيد الربخي KHALIFA ALI RASHID OBAID AL RUBKHI	41293412

Economic Activities	:	الأنشطة الاقتصادية
- Buildings Maintenance		- صيانة المباني
- Landscape And Gardening Services		- خدمات تجميل الحدائق والمنزهات
- Marble and stone cutting works		- أعمال قطع الرخام والحجر
- Tinging and Painting Works		- أعمال الطلاء والدهانات للمباني
- Floor & Wall Tiling Works		- أعمال تخطيط الأرضيات والجدران
- Stone Installation Works		- أعمال تركيب الحجر
Address	:	المصنفح م 37, ق 80 - مكتب 26, مبنى السيدة مريم عتيق ماجد و آخرين
Onwani Address	:	5, شارع الجزيم 3, مصنفح أبوظبي 20316 5, Al Jazzeem 3 St, Musaffah, Abu Dhabi 20316
		العنوان
		العنوان الموحد

Official Email	:	Info.hatch@yahoo.com	:	البريد الإلكتروني الرسمي
Official Mobile	:	+971503681761	:	رقم التواصل الرسمي



هيئة أبوظبي للدفاع المدني
ABU DHABI CIVIL DEFENCE
AUTHORITY



www.added.gov.ae

وثيقة معتمدة وصادرة بدون توقيع أو ختم من دائرة التنمية الاقتصادية - أبوظبي. للتحقق من صحة البيانات الواردة في الرخصة برجاء زيارة الموقع www.tamm.abudhabi
Approved document issued without signature or stamp by the Department of Economic Development - Abu Dhabi. To verify the license kind
visit www.tamm.abudhabi



HATCH
CLADDING

CONTACT US



0503681761
0558022844
0503070351



02 551 2142



info.hatch@yahoo.com



hatch.cladding



www.hatchcladding.com



Al Jazzeem 3 St, Musaffah, M37
Abu Dhabi - U.A.E
P.O.Box: 90855